

# High Voltage Pin Connector (EH)

The EH range offers versatile plugs for TE connectors (TE HVA 280, TE HVA 630 5p, TE HVP 800 2p) and provides housing protection for two types of Rosenberger connectors (HVS240 & HVR 420) in an oval, handle-free design. Additionally, it includes Hirschmann PowerStar connectors (HPS40-2, HPS40 4+2) available in round and square shapes, both with and without handles. These plugs ensure ease of use, even when wearing work gloves, and their designs provide a secure and effortless grip for installation and removal. Equipped with three strategic ribs, the plugs offer robust protection against damage, dust, liquids, and vibration, safeguarding sockets and pins effectively, making them especially suitable for protecting high-voltage connectors in demanding environments.

## Applications:

Ideal for electric vehicle applications, these protectors are designed for TE (TE HVA 280, 630 5p, HVP 800 2p), Rosenberger connectors (HVS240 & HVR 420) and Hirschmann PowerStar (HPS40-2, 4+2) high-voltage pin connectors.

## Main features:



Ideal solution for high voltage pin connectors



Fits TE connectors & Hirschmann PowerStar family



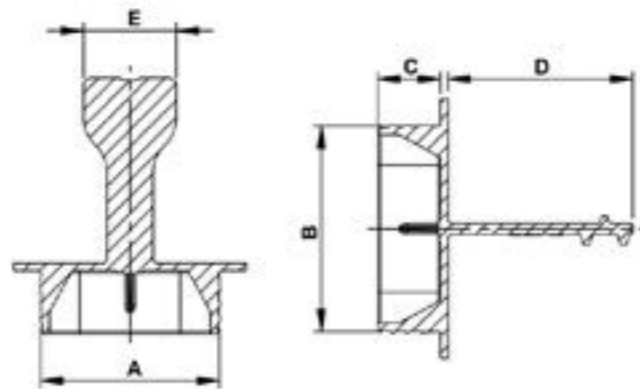
Excellent protection thanks to the 3 ribs against damage, dust & vibration



Made of RECYCLE LDPE & BIO LDPE



Options with & without a handle



## Properties

**Standard colour:** Natural- Other colors may be available upon request

**Standard material:** RECYCLE LDPE

| DBI Ref.    | A mm | B mm | C mm | D mm | E mm | QTY Bag/Box |
|-------------|------|------|------|------|------|-------------|
| EH0220A -AA | 22,2 |      | 8,5  | 25   | 12,5 | 1000/4000   |
| EH0220B -AA | 22,2 |      | 8,5  |      |      | 500/6000    |
| EH0274A -AA | 24,3 | 27,9 | 8,5  | 25   | 12,5 | 500/4000    |
| EH0274B -AA | 24,3 | 27,9 | 8,5  |      |      | 500/4000    |
| EH0275B-AA  | 27,8 | 18,6 | 9,5  |      |      | 0/6400      |
| EH0477B-AA  | 47,9 | 30,1 | 8,5  |      |      | 0/2000      |
| EH0523B-AA  | 51,2 | 32,9 | 23   |      |      | 250/1250    |

**Standard colour:** Green

**Standard material:** BIO LDPE

| DBI Ref.    | A mm | B mm | C mm | D mm | E mm | QTY Bag/Box |
|-------------|------|------|------|------|------|-------------|
| EH0220A -AB | 22,2 |      | 8,5  | 25   | 12,5 | 1000/4000   |
| EH0220B -AB | 22,2 |      | 8,5  |      |      | 500/6000    |
| EH0274A -AB | 24,3 | 27,9 | 8,5  | 25   | 12,5 | 500/4000    |
| EH0274B -AB | 24,3 | 27,9 | 8,5  |      |      | 500/4000    |

**Standard colour:** Blue- Other colors may be available upon request

**Standard material:** LLDPE

| DBI Ref.   | A mm | B mm | C mm | D mm | E mm | QTY Bag/Box |
|------------|------|------|------|------|------|-------------|
| EH0673A-BA | 67,7 | 46,8 | 7,0  |      |      | 88/616      |
| EH0808A-BA | 81,2 | 52,7 | 6,8  |      |      | 50/350      |