

# Low Voltage Pin Connector (EL)

The EL product range consists of newly designed plugs for protection of Hirschmann SealStar 1.2. electrical connectors sockets. The EL plugs are excellent protection against damage for compact connector sockets and pins, dust, liquid and vibration due to optimised design and excellent sealing properties.

### Applications:

Suitable for protection of Hirschmann SealStar 1.2. electrical connectors sockets (single and double row).

### Main features:



Ideal solution for compact connector sockets and pins



Fits Hirschmann SealStar 1.2. electrical connectors sockets



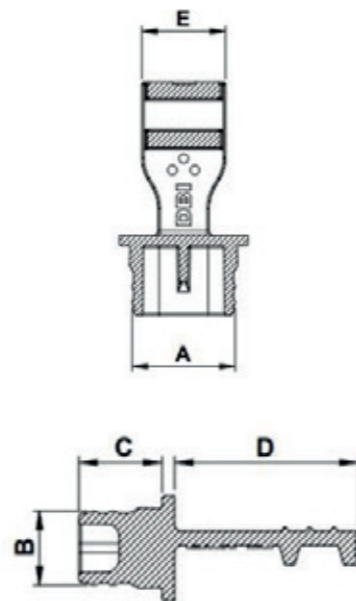
Excellent protection against damage, dust, liquid & other contaminants and vibration



Made of LDPE: also available in BIO LDPE



Ergonomic handle makes plugging in & removal easy



### Properties

**Standard colour:** Yellow- Other colors may be available upon request

**Standard material:** LDPE

DBI Ref.	A mm	B mm	C mm	D mm	E mm	Suitable for connector family	QTY Bag/Box
EL0101A -AA	10,1	6	6,8	15	8,2	SealStar 1.2 MCON 1.2 MLK 1.2	2000/20000
EL0140A -AA	14	6	6,8	15	8,2	SealStar 1.2 MCON 1.2 MLK 1.2	2000/18000
EL0156A -AA	15,5	10,4	7,8	15	8,2	AMP 2.8	500/5000
EL0193A -AA	19,3	7,4	6,8	15	8,2	SealStar 1.2 MCON 1.2 MLK 1.2	1500/15000
EL0222A -AA	22,3	16,7	6,8	15	8,2	TE JPT 2.8	500/5000
EL0227A -AA	22,8	11,7	6,8	15	8,2	SLK 2.8 SealStar 2.8	500/5000
EL0234A -AA	23,4	7,4	6,8	15	8,2	SealStar 1.2 MCON 1.2 MLK 1.2	1000/12000
EL0264A -AA	26,5	10,2	6,8	15	8,2	Delphi GT 280	500/5000
EL0356A -AA	35,6	7,7	6,8	15	8,2	SealStar 1.2 MCON 1.2 MLK 1.2	1000/10000
EL0383A -AA	38,3	11,5	6,8	15	8,2	SealStar 1.2	500/6000

**Standard colour:** Green

**Standard material:** BIO LDPE

DBI Ref.	A mm	B mm	C mm	D mm	E mm	Suitable for connector family	QTY Bag/Box
EL0101A -AB	10,1	6	6,8	15	8,2	SealStar 1.2 MCON 1.2 MLK 1.2	2000/20000
EL0140A -AB	14	6	6,8	15	8,2	SealStar 1.2 MCON 1.2 MLK 1.2	2000/18000
EL0193A -AB	19,3	7,4	6,8	15	8,2	SealStar 1.2 MCON 1.2 MLK 1.2	1500/15000
EL0234A -AB	23,4	7,4	6,8	15	8,2	SealStar 1.2 MCON 1.2 MLK 1.2	1000/12000
EL0356A -AB	35,6	7,7	6,8	15	8,2	SealStar 1.2 MCON 1.2 MLK 1.2	1000/10000
EL0383A -AB	38,3	11,5	6,8	15	8,2	SealStar 1.2	500/6000