

# Low Voltage Pin Connector (EL)

The EL product range offered by DBI consists of designed plugs for protection of Low Voltage pin connectors. The plugs are suitable mainly for Hirschmann SealStar 1.2. electrical connectors sockets (single and double row). The EL plugs for compact connector sockets and pins, are excellent protection against damage, dust, liquids and vibration due to optimized design and excellent sealing properties. The ergonomic handle enables easy plug in and removal. The new EL range is also available in BIO version!

## Applications:

Suitable for protection of Hirschmann SealStar 1.2. electrical connectors sockets (single and double row). The solution fits the following series: TE Connectivity MCON 1.2 mm and Kostal MLK 1.2 mm. EL range offers also products suitable for additional series, such as: AMP 2.8, SLK 2.8, TE JPT 2.8.

## Main features:



Ideal solution for compact connector sockets and pins



Fits Hirschmann SealStar 1.2. electrical connectors sockets



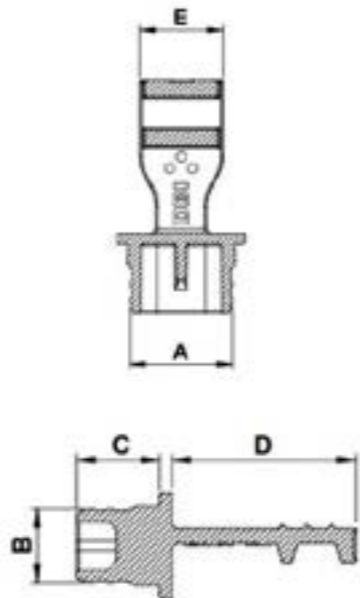
Excellent protection against damage, dust, liquid & other contaminants and vibration



Made of RECYCLE LDPE & BIO LDPE



Ergonomic handle makes plugging in & removal easy



## Properties

Standard colour: Yellow- Other colors may be available upon request

Standard material: RECYCLE LDPE

DBI Ref.	A mm	B mm	C mm	D mm	E mm	Suitable for connector family	QTY Bag/Box
EL0088A-AA	8,9	8,7	6,8	15	8,2	USCAR 0.64	25000/25000
EL0101A-AA	10,1	6,1	6,8	15	8,2	SealStar 1.2 MCON 1.2 MLK 1.2	2000/20000
EL0112A-AA	11,2	8,7	6,8	15	8,2	USCAR 0.64	20000/20000
EL0140A-AA	14	6	6,8	15	8,2	SealStar 1.2 MCON 1.2 MLK 1.2	2000/18000
EL0156A-AA	15,5	10,4	7,8	15	8,2	AMP 2.8	500/5000
EL0178A-AA	17,8	11,7	6,8	15	8,2	SLK 2.8 SealStar 2.8	500/12500
EL0193A-AA	19,3	7,4	6,8	15	8,2	SealStar 1.2 MCON 1.2 MLK 1.2	1500/15000
EL0222A-AA	22,3	16,7	6,8	15	8,2	TE JPT 2.8	500/5000
EL0224A-AA	22,3	13,1	6,8	15	8,2	SealStar 1.2 MLK 1.2	8000/8000
EL0225A-AA	22,5	11,5	7	15	8,2	SealStar 1.2 MLK 1.2	11000/1100
EL0227A-AA	22,8	11,7	6,8	15	8,2	SLK 2.8 SealStar 2.8	500/5000
EL0263A-AA	26,4	13,3	6,8	15	8,2	SealStar 1.2 MLK 1.2	8000/8000
EL0265A-AA	15,7	26,4	6,8	15	8,2		500/7000
EL0234A-AA	23,4	7,4	6,8	15	8,2	SealStar 1.2 MCON 1.2 MLK 1.2	1000/12000
EL0264A-AA	26,5	10,2	6,8	15	8,2	Delphi GT 280	500/5000
EL0278A-AA	27,7	11,7	6,8	15	8,2	SLK 2.8 SealStar 2.8	500/9000
EL0302A-AA	30,1	16,6	7,7	15	8,2	APTIV APEX 2.8	5500/5500
EL0304A-AA	30,4	13,4	6,8	15	8,2	SealStar 1.2 MLK 1.2	7000/7000
EL0356A-AA	35,6	7,7	6,8	15	8,2	SealStar 1.2 MCON 1.2 MLK 1.2	500/8500
EL0357A-AA	35,5	12,5	6,8	15	8,2	TE AMP 2.8	6500/6500
EL0383A-AA	38,3	11,5	6,8	15	8,2	SealStar 1.2	500/4500

Standard colour: Green

Standard material: BIO LDPE

DBI Ref.	A mm	B mm	C mm	D mm	E mm	Suitable for connector family	QTY Bag/Box
EL0101A-AB	10,1	6,1	6,8	15	8,2	SealStar 1.2 MCON 1.2 MLK 1.2	2000/20000
EL0140A-AB	14	6	6,8	15	8,2	SealStar 1.2 MCON 1.2 MLK 1.2	2000/18000
EL0193A-AB	19,3	7,4	6,8	15	8,2	SealStar 1.2 MCON 1.2 MLK 1.2	1500/15000
EL0234A-AB	23,4	7,4	6,8	15	8,2	SealStar 1.2 MCON 1.2 MLK 1.2	1000/12000
EL0356A-AB	35,6	7,7	6,8	15	8,2	SealStar 1.2 MCON 1.2 MLK 1.2	1000/10000
EL0383A-AB	38,3	11,5	6,8	15	8,2	SealStar 1.2	500/6000