

Protectors with Handle (NS)

The NS type is protection with a handle, which makes it easy to remove after use. The conical shape for multi-dimensions fits as a plug or cap. Various materials are available, which makes the solution more flexible in relation to the sealed hole. In this range some parts are available with vent hole.

Applications:

NS range is recommended for fluid transfer systems as protection for hoses and flexible tubes. It can also protect each kind of hole and fitting in automotive applications.

Main features:



Ideal solution for fluid transfer systems



Suitable for Automotive segment



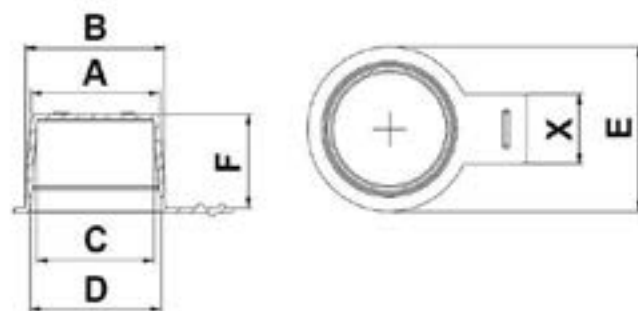
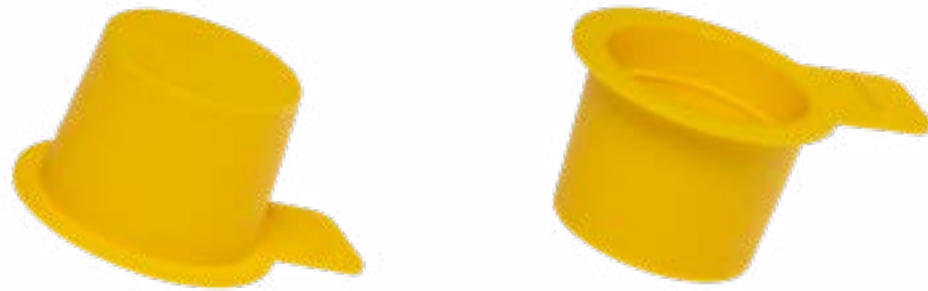
Multi-dimensional fit as a cap or plug



Made of RECYCLE LDPE, TPE, EVA & PA66



Easy mounting & dismounting



Properties

Standard colour: Yellow- Other colors may be available upon request

Standard material: RECYCLE LDPE

DBI Ref.	A mm	B mm	C mm	D mm	E mm	F mm	Venthole	QTY Bag/Box
NS0092A-AA	8,6	9,2	-	-	22,0	8,0		500/14000
NS0096A-AA	8,2	9,8	6,9	8,0	12,7	9,0		1000/30000
NS0097A-AA	8,2	9,6	6,9	7,9	12,9	8,8		1000/30000
NS0100A-AA	9,0	10,1	7,6	9,0	13,7	9,9		1000/30000
NS0110A-AA	9,7	11,0	8,2	9,5	13,8	9,9		1000/25000
NS0121A-AA	10,4	12,4	9,3	10,8	16,1	9,6		1000/20000
NS0123A-AA	11,7	12,3	-	-	22,0	8,0		500/14000
NS0135A-AA	11,9	13,7	10,7	12,1	17,7	11,1		1000/15000
NS0155A-AA	13,3	15,5	11,9	14,1	24,0	12,9		1000/8000
NS0159A-AA	14,3	16,3	12,8	14,6	18,8	12,8		750/10500
NS0159R-AA	14,3	16,3	12,8	14,6	18,8	12,8		750/11250
NS0170A-AA	15,1	16,8	13,9	15,6	20,0	13,0		1000/10000
NS0180A-AA	16,1	18,1	14,4	16,3	20,1	13,5		500/7000
NS0184A-AA	16,5	18,6	14,9	17,2	22,9	14,1		500/7000
NS0186A-AA	16,9	18,6	15,0	17,1	22,9	14,1		1000/7000
NS0190A-AA	17,2	19,0	15,9	17,7	23,0	14,0		500/6500
NS0190B-AA	17,2	19,0	15,9	17,7	23,0	14,0		500/6000
NS0211A-AA	19,3	21,1	17,6	19,8	24,7	14,0		500/12000
NS0255A-AA	22,6	25,5	20,2	23,3	28,8	15,5		500/3500
NS0264B-AA	24,5	26,4	-	-	31,0	13,0		500/3500
NS0273A-AA	26,6	27,3	24,7	25,4	35,8	12,0		500/3000
NS0300F-AA	28,0	30,0	-	28,2	44,6	10,8		0/2500
NS0306F-AA	27,9	30,6	26,2	29,1	55,2	13,8		150/1650
NS0306K-AA	27,9	30,6	26,2	29,1	55,2	13,8	x	2600/2600
NS0307F-AA			27,8	29,2	37,0	12,0		3250/3250
NS0314F-AA	28,0	31,9	26,2	29,3	65,4	13,6		250/1250
NS0319B-AA	27,9	32,0	26,4	29,4	47,0	13,5		2500/2500
NS0349F-AA	32,9	35,2	31,2	33,5	48,0	21,6		2500/2500
NS0352F-AA	33,1	35,2	31,7	33,4	57,0	11,7		3000/3000
NS0367A-AA	34,2	36,7		35,0	41,0	16,4		250/1750
NS0369A-AA	34,7	37,1	33,3	36,2	41,6	17,3		250/1750
NS0381A-AA	35,6	38,1	34,0	36,4	41,1	16,4		250/3500
NS0401A-AA	38,2	40,1	36,7	38,6	46,8	18,0		250/2500

Protectors with Handle (NS) - continued

The NS type is protection with a handle, which makes it easy to remove after use. The conical shape for multi-dimensions fits as a plug or cap. Various materials are available, which makes the solution more flexible in relation to the sealed hole. In this range some parts are available with vent hole.

Applications:

NS range is recommended for fluid transfer systems as protection for hoses and flexible tubes. It can also protect each kind of hole and fitting in automotive applications.

Main features:



Ideal solution for fluid transfer systems



Suitable for Automotive segment



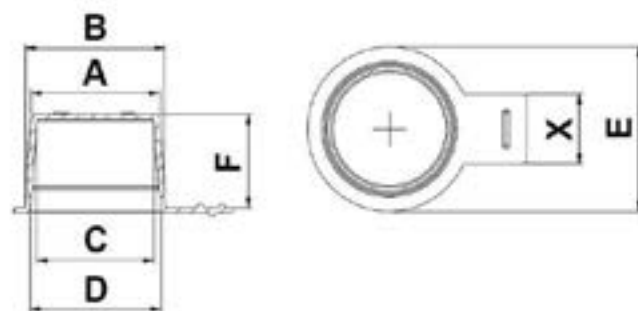
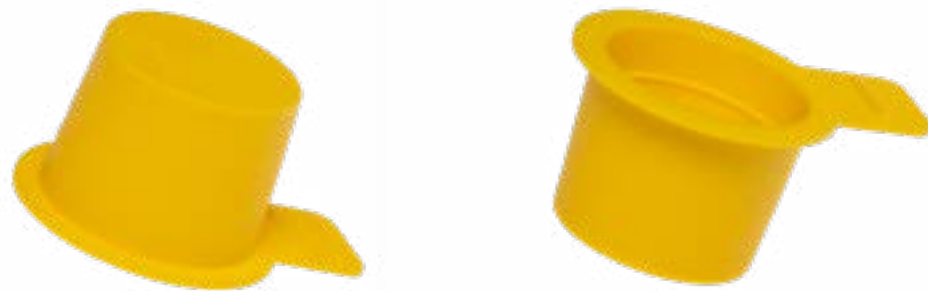
Multi-dimensional fit as a cap or plug



Made of RECYCLE LDPE, TPE, EVA & PA66



Easy mounting & dismounting



DBI Ref.	A mm	B mm	C mm	D mm	E mm	F mm	Venthole	QTY Bag/Box
NS0401L-AA	38,2	40,1	36,7	38,6	46,8	18,0	x	250/2500
NS0410A-AA	38,2	41,0	36,8	39,7	46,8	18,3		250/2500
NS0410B-AA	38,2	41,0	36,8	39,7	46,8	18,3		250/2000
NS0410F-AA	38,2	41,0	36,8	39,7	46,8	18,3		0/1250
NS0419F-AA	39,5	41,2	-	-	63,7	9,4		100/1000
NS0467A-AA	43,7	46,7	42,5	44,5	50,0	18,9		250/1750
NS0477A-AA	46,0	48,5	44,7	46,8	52,6	18,6		100/2000
NS0510B-AA	48,0	51,6	46,0	49,2	55,0	14,8		250/2000
NS0516F-AA	49,5	51,7	47,9	51,7	63,5	18,7		100/700
NS0542A-AA	50,8	54,2	49,0	52,5	59,3	19,6		100/800
NS0542B-AA	50,8	54,2	49,0	52,5	59,3	19,6		100/800
NS0576A-AA	55,7	58,4	54,1	56,4	62,1	19,6		100/600
NS0576B-AA	55,7	58,4	54,1	56,4	62,1	19,6		100/600
NS0593A-AA	57,5	59,6	55,9	57,6	65,2	19,6		100/1200
NS0607A-AA	58,3	60,7	56,9	59,0	65,1	19,3		100/1200
NS0651A-AA	63,3	66,0	61,0	63,7	70,0	20,4		100/900
NS0651L-AA	63,3	66,0	61,0	63,7	70,0	20,4	x	900/900
NS0713A-AA	69,4	71,3	67,8	69,8	75,0	17,7		250/250
NS0760A-AA	73,8	76,0	71,8	74,4	80,9	20,9		50/750
NS0873A-AA	84,1	87,3	82,7	85,5	92,2	21,9		0/500
NS1074A-AA	103,5	107,4	101,7	105,6	114,3	22,5		400/400
NS1657A-AA	161,0	165,7	-	-	173,1	37,5		0/100

Standard colour: Yellow- Other colors may be available upon request
Standard material: TPE

DBI Ref.	A mm	B mm	C mm	D mm	E mm	F mm	Venthole	QTY Bag/Box
NS0072A-TA	6,4	7,2	5,0	5,5	11,5	6,7		1000/30000
NS0094B-TA	8,2	9,4	6,5	7,9	13,0	9,1		1000/20000
NS0096A-TA	8,3	9,7	6,7	8,0	12,8	9,1		1000/30000
NS0097A-TA	7,9	9,4	6,7	7,9	13,1	9,0		1000/20000
NS0100A-TA	9,1	10,0	7,5	8,8	13,6	9,8		1000/30000
NS0110A-TA	9,5	10,8	7,9	9,3	13,7	9,8		1000/25000

Protectors with Handle (NS) - continued

The NS type is protection with a handle, which makes it easy to remove after use. The conical shape for multi-dimensions fits as a plug or cap. Various materials are available, which makes the solution more flexible in relation to the sealed hole. In this range some parts are available with vent hole.

Applications:

NS range is recommended for fluid transfer systems as protection for hoses and flexible tubes. It can also protect each kind of hole and fitting in automotive applications.

Main features:



Ideal solution for fluid transfer systems



Suitable for Automotive segment



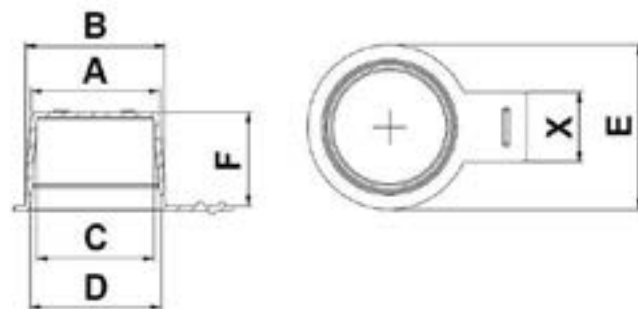
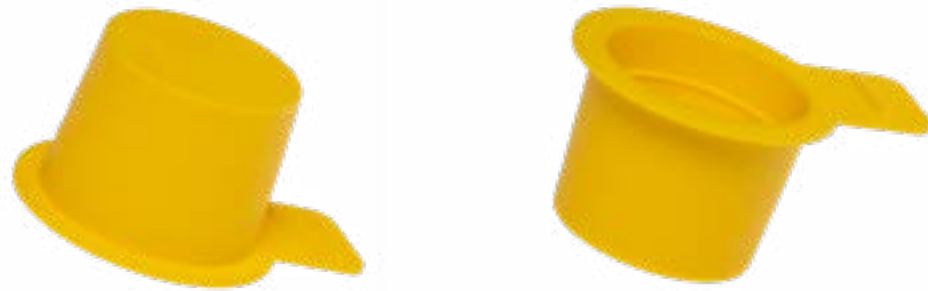
Multi-dimensional fit as a cap or plug



Made of RECYCLE LDPE, TPE, EVA & PA66



Easy mounting & dismantling



DBI Ref.	A mm	B mm	C mm	D mm	E mm	F mm	Venthole	QTY Bag/Box
NS0119F-TA	9,9	12,1	8,6	10,8	24,0	6,4		1000/14000
NS0120B-TA	10,6	12,1	8,9	10,5	15,7	9,7		1000/14000
NS0121A-TA	10,3	12,2	8,8	10,6	15,7	9,4		1000/20000
NS0133B-TA	12,1	13,3	10,5	12,1	17,7	11,1		1000/10000
NS0133C-TA	12,1	13,3	10,5	12,1	17,7	11,1		1000/8000
NS0133F-TD	12,0	14,5	9,5	11,5	17,7	11,1		500/6000
NS0135A-TA	11,8	13,5	10,4	11,9	17,7	11,1		1000/16000
NS0135C-TA	11,8	13,5	10,4	11,9	17,7	11,1		1000/9000
NS0155A-TA	13,3	15,5	11,9	14,1	24,0	12,6		1000/8000
NS0155B-TA	13,3	15,5	11,9	14,1	24,0	12,6		500/4000
NS0158B-TA	14,1	16,0	12,7	14,4	19,1	12,7		1000/10000
NS0159A-TA	14,3	16,2	12,8	14,5	18,7	12,9		1000/10000
NS0170A-TA	15,1	16,5	13,8	15,2	20,0	13,0		1000/7000
NS0170B-TA	15,1	16,5	13,8	15,2	20,0	13,0		1000/7000
NS0171A-TA	14,9	17,1	13,4	15,7	24,0	12,4		1000/7000
NS0173A-TA	15,1	17,3	13,8	16,0	24,0	8,5		1000/7000
NS0180A-TA	16,1	18,1	14,4	16,2	20,2	13,5		500/7000
NS0184A-TA	16,4	18,4	14,7	18,4	22,9	13,9		500/7000
NS0186A-TA	16,7	18,8	15,0	17,4	23,0	13,9		500/7000
NS0190A-TA	17,4	19,5	15,8	18,1	23,3	13,9		500/6500
NS0202A-TA	17,9	20,0	16,0	18,6	33,2	13,8		1000/4000
NS0211A-TA	19,1	20,7	17,3	19,3	24,3	14,0		500/12000
NS0211C-TA	19,1	20,7	17,3	19,3	24,3	14,0		500/4000
NS0227A-TA	20,4	22,7	19,0	21,0	33,1	12,7		1000/4000
NS0231B-TA	20,7	23,1	18,0	21,6	27,1	8,7		500/6000
NS0384A-TA	35,1	38,4	33,4	36,7	41,1	16,4		250/3500
NS0399B-TD	36,5	39,9	-	-	56,0	12,0		250/1250

Standard colour: Yellow- Other colors may be available upon request
Standard material: PA66

DBI Ref.	A mm	B mm	C mm	D mm	E mm	F mm	Venthole	QTY Bag/Box
NS0651A-GA	64,2	66,0	62,7	64,5	68,0	20,0		0/900

Standard colour: Yellow- Other colors may be available upon request
Standard material: EVA

DBI Ref.	A mm	B mm	C mm	D mm	E mm	F mm	Venthole	QTY Bag/Box
NS0231B-AE	20,7	23,1	18,0	21,6	27,1	8,8		500/6000