

Metric Threaded Plugs (TA)

Threaded plugs that effectively protect internal threads in hydraulic components are particularly appreciated for their tightness and quality. These products are available in various materials and with different sealing solutions, depending on the high-temperature requirements. Hexagonal shape to secure easy mounting and dismounting using standard automatic or semiautomatic tools. Flanges come in various diameters to ensure better masking. In this range some parts are available with washer or O-ring.

Applications:

TA range is recommended for protection of hydraulic and steering components tested under pressure.

Main features:



Ideal solution for internal threads



Suitable for Hydraulics segment



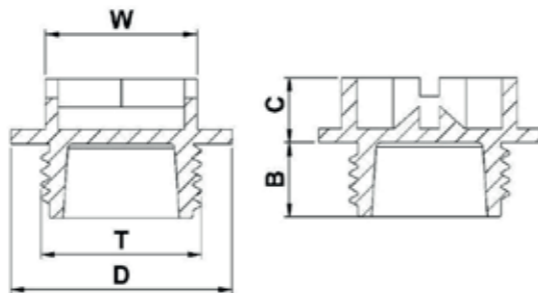
Excellent protection due to the sealing solutions



Made of LDPE, HDPE & PA66



Hexagonal shape for easy mounting & dismounting



Properties

Standard colour: Yellow- Other colors may be available upon request

Standard material: LDPE

DBI Ref.	Fits Thread T	B mm	C mm	D mm	W mm	QTY Bag/Box
TA0899A-AA	M8 x 1	9,0	10,0	17,0	-	1000/4000
TA1299A-AA	M12 x 1	11,0	6,0	19,0	-	0/1000
TA2798A-AA	M27 x 1.5	13,0	7,0	34,0	-	1000/2000
TA3399A-AA	M33 x 1.5	14,0	7,0	42,0	-	500/1000
TA3699A-AA	M36 x 1.5	15,2	10,0	43,5	-	500/1000
TA4298A-AA	M42 x 1.5	15,0	10,0	54,0	-	250/1000
TA4599A-AA	M45 x 1.5	15,0	10,0	60,0	-	250/1000
TA4598A-AA	M45 x 2	15,0	10,0	60,0	-	250/1000
TA4899A-AA	M48 x 2	15,0	10,0	60,0	-	250/1000

Standard colour: Yellow- Other colors may be available upon request

Standard material: HDPE

DBI Ref.	Fits Thread T	B mm	C mm	D mm	D2 mm	W mm	QTY Bag/Box
TA1001C-EA	M10 x 1	8,5	7,4	16,6	#N/D	12,0	250/7500
TA1401C-EA	M14 x 1.5	8,1	7,0	20,6	#N/D	17,0	250/7000
TA1601C-EA	M16 x 1.5	8,5	7,5	20,6	#N/D	17,0	250/8000
TA1801C-EA	M18 x 1.5	8,0	7,5	20,6	#N/D	16,9	250/8000

Standard colour: Yellow- Other colors may be available upon request

Standard material: PA66

DBI Ref.	Fits Thread T	B mm	C mm	D mm	D2 mm	W mm	QTY Bag/Box
TA1202C-GA	M12 x 1.5	8,3	7,3	21,1	10,0	17,0	250/10000
TA1401C-GA	M14 x 1.5	8,3	7,5	21,0	12,0	17,0	250/7000
TA1608C-GA	M16 x 2	14,9	7,3	24,9	14,0	17,0	250/2500
TA2203A-GA	M22 x 1.5	8,3	7,2	32,3	19,0	22,0	250/3000
TA2203C-GA	M22 x 1.5	8,3	7,2	32,3	19,0	22,0	250/4000
TA2703C-GA	M27 x 2	11,6	7,6	35,0	23,0	27,0	100/2200
TA3302C-GA	M33 x 2	13,6	7,5	41,7	29,8	32,0	100/1500
TA3304C-GA	M33 x 2	13,7	7,5	41,7	29,8	32,0	100/1500
TA1001B-GA	M10 x 1	8,5	7,4	16,8	17,1	12,0	250/7500
TA1003B-GA	M10 x 1	8,5	7,1	20,9	18,8	17,0	250/3750
TA1002B-GA	M10 x 1.5	8,5	7,4	16,8	18,8	12,0	250/7500
TA1202B-GA	M12 x 1.5	8,3	7,3	21,1	18,7	17,0	250/5000
TA1401B-GA	M14 x 1.5	8,3	7,5	21,0	20,9	17,0	250/7000
TA1601B-GA	M16 x 1.5	8,5	7,4	21,1	20,0	17,0	250/8000
TA1601D-GA	M16 x 1.5	8,5	7,4	21,1	#N/D	17,0	250/8000
TA1605B-GA	M16 x 1.5	8,4	7,5	28,7	29,0	22,0	250/5000
TA1607B-GA	M16 x 1.5	8,4	7,3	24,8	24,1	17,0	250/7000
TA1607D-GA	M16 x 1.5	8,4	7,3	24,8	#N/D	17,0	250/7000
TA1802B-GA	M18 x 1.5	8,3	7,3	24,8	25,4	17,0	250/6500
TA1804E-GA	M18 x 1.5	8,1	7,5	27,1	25,4	21,9	250/5000
TA1805B-GA	M18 x 1.5	8,3	7,5	28,8	27,6	22,0	250/2500
TA1806B-GA	M18 x 1.5	8,2	7,5	32,3	27,6	22,0	250/4500
TA2001B-GA	M20 x 1.5	8,5	7,5	27,1	26,0	22,0	250/5000
TA2201B-GA	M22 x 1.5	8,3	7,3	26,8	28,6	22,0	250/5000
TA2202B-GA	M22 x 1.5	8,3	7,5	28,8	28,6	22,0	250/3500
TA2203B-GA	M22 x 1.5	8,3	7,2	32,3	28,6	22,0	250/4000
TA2204B-GA	M22 x 1.5	8,2	7,5	35,0	32,7	27,0	250/2750
TA2601B-GA	M26 x 1.5	8,5	7,7	35,0	33,7	27,0	250/3000
TA2702B-GA	M27 x 2	8,5	7,5	35,0	34,0	27,0	100/2200
TA2703B-GA	M27 x 2	11,6	7,6	35,0	34,0	27,0	100/2200
TA2703D-GA	M27 x 2	11,6	7,6	35,0	40,0	27,0	0/2200
TA2703E-GA	M27 x 2	11,6	7,6	35,0	33,7	27,0	250/2000
TA3303B-GA	M33 x 2	13,5	7,5	41,5	44,9	31,8	100/1500
TA3303D-GA	M33 x 2	13,5	7,5	41,5	41,7	31,8	100/1500