

Threaded Metric Caps (AA)

Threaded caps that effectively protect external threads where, in most cases, the liquid is inside the application that is tested under pressure. Some products are available with sealing features to ensure tight closure. Soft and hard material versions are possible in order to match different requirements. Some parts are available with washer.

Applications:

AA range is recommended for several applications: cylinder blocks, cylinder heads, adapter plates, connecting rods, lubrication pumps, balance units, oil sumps, timing gears.

Main features:



Ideal solution for cylinder blocks & heads



Suitable for Hydraulics segment



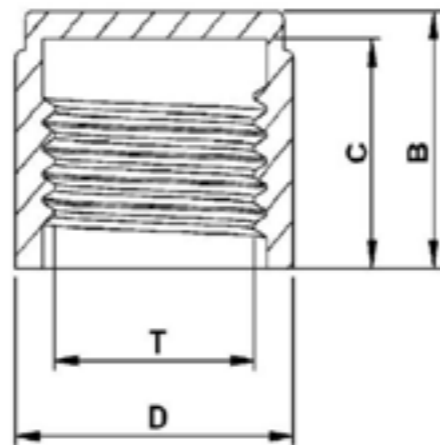
Sealing features for tight closure



Made of RECYCLE LDPE, LLDPE & HDPE



Outside vertical ribs for easy mounting & dismantling



Properties

Standard colour: Yellow

Standard material: RECYCLE LDPE

DBI Ref.	Fits Thread T	B mm	C mm	D mm	Washer	QTY Bag/Box
AA1298A -AA	M12 x 1.5	12,7	14,2	16,4		0/1000
AA1299A -AA	M12 x 1	14,2	12,7	16,4		1000/5000
AA2499A -AA	M24 x 1.5	15,5	14,2	24,7		0/1000
AA2699A -AA	M26 x 1.5	14,5	12,5	33,0	x	1000/3000
AA2799A -AA	M27 x 2	15,3	13,5	32,0		0/1000
AA3399A -AA	M33 x 2	22,5	21,1	40,0		500/1500
AA4598A -AA	M45 x 2	16,5	15,0	51,0		100/1000

Standard colour: Yellow- Other colors may be available upon request

Standard material: LLDPE

DBI Ref.	Fits Thread T	B mm	C mm	D mm	Washer	QTY Bag/Box
AA1201A -BA	M12 x 1	12,1	10,3	16,9		500/14000
AA1202A -BA	M12 x 1.5	12,0	10,0	17,0		500/12000
AA1401A -BA	M14 x 1.5	11,9	10,6	18,8	x	250/10000
AA1601A -BA	M16 x 1.5	13,5	11,8	20,9	x	250/8000
AA1602A -BA	M16 x 1.5	25,9	23,9	20,3		100/4500
AA1801A -BA	M18 x 1.5	12,3	10,5	22,2	x	250/3500
AA2001A -BA	M20 x 1.5	15,2	13,6	25,4	x	250/4500
AA2201A -BA	M22 x 1.5	14,7	13,9	27,0	x	250/4500
AA2401A -BA	M24 x 1.5	13,5	12,0	29,5	x	250/4000
AA3001A -BA	M30 x 2	14,2	12,5	36,0	x	250/2500
AA5201A -BA	M52 X 2	18,5	16,7	59,2		100/700

Standard colour: Yellow

Standard material: HDPE

DBI Ref.	Fits Thread T	B mm	C mm	D mm	Washer	QTY Bag/Box
AA0801A -EA	M8 x 1	10,5	9,0	12,0		100/10000
AA1201A -EA	M12 x 1	12,0	10,3	17,0		500/14000
AA1202A -EA	M12 x 1.5	11,9		17,0	x	250/12000
AA1401A -EA	M14 x 1.5	11,9	10,5	19,1	x	250/10000
AA1601A -EA	M16 x 1.5	13,5	12,4	20,9	x	250/8000
AA1801A -EA	M18 x 1.5	12,5	10,4	22,4	x	250/3500
AA2001A -EA	M20 x 1.5	15,3	13,9	25,3		250/4500
AA2201A -EA	M22 x 1.5	14,5	13,7	26,8	x	250/5000
AA2401A -EA	M24 x 1.5	13,5	12,0	29,5		250/4000
AA2699A -EA	M26 x 1.5	15,3	13,5	30,8	x	250/2000
AA3001A -EA	M30 x 2	14,5	12,8	36,0		250/2500
AA3099A -EA	M30 x 1.5	16,3	14,5	35,0		250/2500
AA3401A -EA	M34 x 1,5	9,7	8,1	38,9		2000/2000
AA3602A -EA	M36 x 2	17,0	15,1	41,8	x	100/1600
AA3899A -EA	M38 x 1.5	17,0	15,0	44,0		100/600
AA4201A -EA	M42 x 2	16,3	14,8	49,1		100/1200
AA4598A -EA	M45 x 2	20,3	18,7	51,0	x	100/1000
AA5201A -EA	M52 x 2	18,7	16,9	59,3	x	100/800

Standard colour: Yellow- Other colors may be available upon request

Standard material: PA66

DBI Ref.	Fits Thread T	B mm	C mm	D mm	Washer	QTY Bag/Box
AA1002A -GA	M10 x 1	11,0	10,0	14,0		0/12500