

Smooth Cover Plugs (DA)

The DA type is a very uniform solution, ideal for protecting holes and internal threads in plate work. The head of the plug is flat.

Applications:

DA range is recommended for protecting holes and internal threads in plate work where smooth finish is required.

Main features:



Ideal solution for plate work



Suitable for Renewable Energy segment



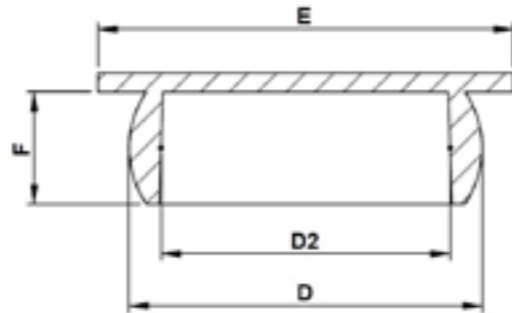
Sealing features for tight closure



Made of RECYCLE LDPE



Easy mounting & dismantling



Properties

Standard colour: Natural- Other colors may be available upon request

Standard material: RECYCLE LDPE

DBI Ref.	D mm	D2 mm	E mm	F mm	QTY Bag/Box
DA0072Z-AA	7,2	5,2	11,2	5,5	10000/30000
DA0083A-AA	8,3	4,9	10,0	3,0	1000/36000
DA0084Z-AA	8,4	6,1	11,0	5,5	1000/6000
DA0091Z-AA	9,2	7,0	14,4	5,5	1000/5000
DA0092A-AA	9,2	6,7	14,3	5,5	1000/40000
DA0101Z-AA	10,1	8,2	14,4	5,5	1000/10000
DA0106A-AA	10,6	8,6	14,4	5,5	1000/20000
DA0113A-AA	11,3	9,5	14,4	5,5	1000/18000
DA0118Z-AA	11,8	10,0	14,4	5,5	1000/10000
DA0123A-AA	12,2	10,2	18,4	7,0	1000/18000
DA0130Z-AA	13,0	11,1	18,7	7,0	500/15000
DA0133Z-AA	13,3	11,4	18,7	7,0	1000/7000
DA0136Z-AA	13,6	11,7	18,7	7,0	500/16000
DA0140Z-AA	14,0	12,1	18,7	7,0	500/16000
DA0144A-AA	14,4	12,3	18,7	7,0	1000/20000
DA0150Z-AA	15,0	12,9	18,7	7,0	5000/10000
DA0158A-AA	15,8	13,4	18,7	7,0	1000/16000
DA0165A-AA	16,5	14,0	18,7	7,0	1000/16000
DA0171A-AA	17,1	14,7	24,2	9,0	500/8000
DA0178Z-AA	17,8	15,9	24,6	9,0	500/9000
DA0185A-AA	18,5	16,1	24,3	9,0	250/8000
DA0189Z-AA	18,9	16,8	24,6	9,0	250/8000
DA0193A-AA	19,3	17,2	24,2	9,0	1000/8000
DA0201Z-AA	20,1	18,1	24,6	9,0	250/8000
DA0207Z-AA	20,7	18,4	24,6	9,0	250/8000
DA0212Z-AA	21,2	19,0	24,6	9,0	250/8000
DA0217Z-AA			24,6	9,0	1000/8000
DA0230Z-AA	23,0	20,8	28,5	9,0	250/6000
DA0239A-AA	23,9	20,9		9,9	250/4000
DA0240A-AA	23,7	21,7	29,0	10,0	250/5000
DA0248A-AA	24,8	22,8	28,3	9,0	250/5000
DA0255A-AA	25,3	22,8	28,3	8,9	500/5000
DA0265Z-AA	26,5	24,6	28,5	9,0	250/5000
DA0270Z-AA	27,0	24,8	34,8	12,0	250/4000
DA0275Z-AA	27,5	25,0	34,8	12,0	1000/2000
DA0277A-AA	27,7	23,0	32,6	8,8	250/5000
DA0288Z-AA	28,8	26,6	34,8	12,0	100/3200
DA0305Z-AA	30,5	27,3	34,8	12,0	100/3200
DA0312A-AA	31,5	27,7	34,5	11,6	250/2500
DA0326A-AA	32,6	29,0	34,3	12,0	250/3000
DA0334A-AA	33,4	30,7	35,6	12,0	250/2500
DA0346Z-AA	34,6	31,6	40,4	12,0	100/2500
DA0355Z-AA	35,5	32,3	40,4	12,0	100/2000
DA0390Z-AA	39,0	35,3	49,3	16,0	250/1000
DA0404A-AA	40,4	37,1	45,0	11,9	100/1500
DA0407Z-AA	40,7	37,0	49,5	16,0	100/1000
DA0425Z-AA	42,5	38,0	49,3	16,0	100/1200
DA0467A-AA	46,7	41,9	58,7	18,0	100/700
DA0515Z-AA	51,5	47,5	58,7	18,0	100/700
DA0541Z-AA	54,1	50,2	58,7	18,0	500/1000
DA0582Z-AA	58,2	53,3	64,8	18,0	100/500
DA0596A-AA	59,6	56,2	73,5	17,5	100/1000
DA0737Z-AA	73,7	68,7	82,3	17,4	50/500
DA0808Z-AA	80,8	75,8	92,5	17,4	50/250
DA0988Z-AA	98,8	92,5	112,0	18,0	50/200
DA1117A-AA	111,7	105,2	121,6	17,4	150/150