

# Banjo Protectors (HA)

Banjo protectors are used to safeguard automotive pipe ends during transport and storage. Thanks to additional projection of material inside the protector the operator can feel the characteristic click when putting the cap onto the Banjo ending. This guarantees that the part sits tight enough and will not fall off during transport.

### Applications:

HA range is recommended for automotive pipe ends to protect fuel pressure systems, turbo charging, A/C & brake installations.

### Main features:



Ideal solution for fuel pressure systems, turbo charging, A/C & brake installations.



Suitable for Automotive segment



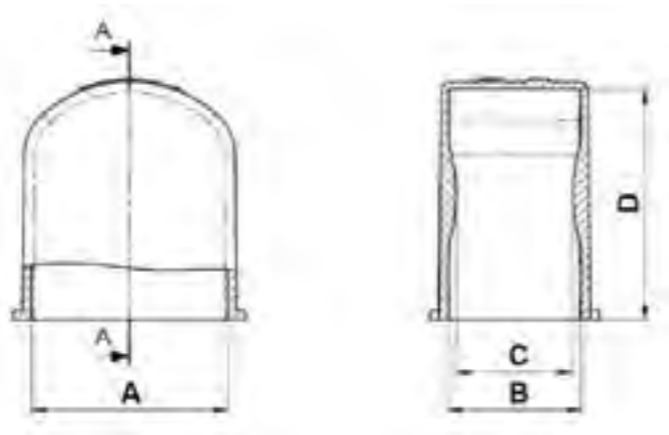
Excellent protection thanks to additional projection of material



Made of RECYCLE LDPE



Easy mounting & dismounting



### Properties

**Standard colour:** Yellow- Other colors may be available upon request

**Standard material:** RECYCLE LDPE

DBI Ref.	A mm	B mm	C mm	D mm	QTY Bag/Box
HA0170Z -AA	-	10,0	-	-	2000/4000
HA0200Z -AA	20,0	12,0	-	-	0/4000
HA0215A -AA	21,5	14,6	12,8	25,3	500/6000
HA0250A-AA	24,1	14,9	13,2	32,0	100/1800
HA0300A -AA	29,8	14,7	12,5	35,6	100/1800
HA0306A -AA	30,6	16,3	14,3	35,4	500/3000