

Cylindrical Protectors (MA)

The MA type is a universal protection cap developed for perfect coverage of straight metal, plastic pipes and tubes or external threads in many different hydraulic applications. It has an internal rib, which gives good tightness and is ergonomic. In this range some parts are available with vent hole.

Applications:

MA range is recommended for coverage of straight metal, plastic pipes and tubes or external threads in many different hydraulic applications.

Main features:



Ideal solution for straight metal/plastic pipes & tubes



Suitable for Hydraulics segment



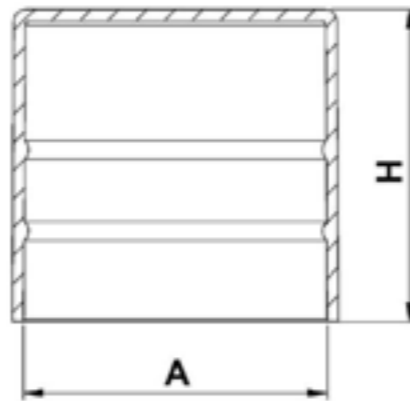
Excellent protection & tightness thanks to an internal rib



Made of RECYCLE LDPE, LLDPE, HDPE, TPE & EVA



Easy mounting & dismantling



Properties

Standard colour: Yellow- Other colors may be available upon request

Standard material: RECYCLE LDPE

| DBI Ref. | A mm | H mm | Venthole | QTY Bag/Box |
|------------|------|------|----------|-------------|
| MA0050A-AA | 5,3 | 14,3 | | 1000/22000 |
| MA0056A-AA | 5,6 | 14,8 | | 1000/20000 |
| MA0063A-AA | 6,2 | 13,9 | | 1000/20000 |
| MA0080A-AA | 8,5 | 17,0 | | 1000/22000 |
| MA0096A-AA | 9,6 | 16,3 | | 1000/16000 |
| MA0100A-AA | 10,3 | 17,9 | | 1000/14000 |
| MA0110A-AA | 11,1 | 13,9 | | 1000/14000 |
| MA0120A-AA | 12,2 | 18,0 | | 1000/10000 |
| MA0127A-AA | 12,8 | 18,0 | | 1000/11000 |
| MA0140A-AA | 14,2 | 12,1 | | 1000/12000 |
| MA0150A-AA | 14,8 | 18,8 | | 1000/8000 |
| MA0160A-AA | 16,4 | 18,7 | | 500/6000 |
| MA0172A-AA | 17,8 | 19,5 | | 500/5000 |
| MA0180A-AA | 18,4 | 19,5 | | 500/5000 |
| MA0190A-AA | 19,4 | 18,8 | | 500/4500 |
| MA0200A-AV | 20,6 | 21,6 | | 0/4000 |
| MA0200A-AA | 20,2 | 20,6 | | 500/4000 |
| MA0209A-AA | 21,1 | 20,6 | | 500/4000 |
| MA0213A-AA | 22,0 | 20,2 | | 500/3500 |
| MA0220A-AA | 21,9 | 24,0 | | 500/3000 |
| MA0230A-AA | 23,1 | 22,5 | | 250/2500 |
| MA0240A-AA | 24,2 | 18,5 | | 250/3000 |
| MA0240Z-AA | 24,2 | 18,5 | | 0/3200 |
| MA0250A-AA | 25,3 | 24,8 | | 250/2500 |
| MA0260A-AA | 25,8 | 25,1 | | 250/2000 |
| MA0265A-AA | 27,0 | 24,8 | | 250/2000 |
| MA0270A-AA | 26,9 | 25,0 | | 250/2000 |
| MA0280A-AA | 28,0 | 24,8 | | 250/2000 |
| MA0280D-AA | 28,0 | 24,8 | x | 250/2000 |
| MA0300A-AA | 30,3 | 28,6 | | 250/3000 |
| MA0305A-AA | 31,0 | 26,6 | | 250/3000 |
| MA0320A-AA | 32,6 | 27,8 | | 250/2500 |
| MA0320D-AA | 32,6 | 27,8 | x | 250/2500 |
| MA0330A-AA | 33,0 | 27,6 | | 250/2500 |
| MA0335A-AA | 33,4 | 27,0 | | 250/2500 |
| MA0337A-AA | 34,0 | 28,7 | | 250/2500 |
| MA0337L-AA | 34,0 | 28,7 | x | 250/2000 |
| MA0350Z-AA | 35,0 | 30,0 | | 0/2000 |
| MA0360A-AA | 36,5 | 28,7 | | 100/2200 |
| MA0370A-AA | 36,7 | 9,1 | | 8000/8000 |
| MA0380A-AA | 38,6 | 28,0 | | 100/2000 |
| MA0400A-AA | 40,3 | 18,8 | | 100/1800 |
| MA0400D-AA | 40,3 | 18,8 | x | 100/1800 |
| MA0413A-AA | 42,1 | 27,6 | | 100/1800 |

Cylindrical Protectors (MA) - continued

The MA type is a universal protection cap developed for perfect coverage of straight metal, plastic pipes and tubes or external threads in many different hydraulic applications. It has an internal rib, which gives good tightness and is ergonomic. In this range some parts are available with vent hole.

Applications:

MA range is recommended for coverage of straight metal, plastic pipes and tubes or external threads in many different hydraulic applications.

Main features:



Ideal solution for straight metal/plastic pipes & tubes



Suitable for Hydraulics segment



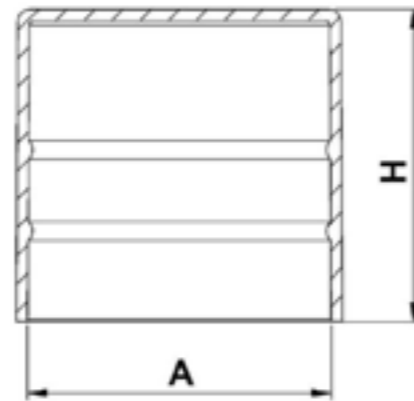
Excellent protection & tightness thanks to an internal rib



Made of RECYCLE LDPE, LLDPE, HDPE, TPE & EVA



Easy mounting & dismantling



| DBI Ref. | A mm | H mm | Venthole | QTY Bag/Box |
|------------|-------|-------|----------|-------------|
| MA0424A-AA | 42,7 | 28,6 | | 100/1600 |
| MA0445A-AA | 45,3 | 35,6 | | 100/1200 |
| MA0445D-AA | 45,3 | 35,6 | x | 100/1200 |
| MA0480A-AA | 48,5 | 36,3 | | 100/800 |
| MA0483A-AA | 48,6 | 35,7 | | 100/1000 |
| MA0500C-AA | 50,5 | 28,8 | x | 0/1400 |
| MA0570A-AA | 57,6 | 35,1 | | 50/700 |
| MA0580A-AA | 58,3 | 49,9 | | 50/450 |
| MA0600A-AA | 60,1 | 36,3 | | 50/700 |
| MA0603A-AA | 60,3 | 36,1 | | 50/600 |
| MA0603L-AA | 60,3 | 36,1 | x | 50/600 |
| MA0635A-AA | 63,6 | 36,2 | | 50/600 |
| MA0635B-AA | 63,6 | 36,2 | x | 50/600 |
| MA0635L-AA | 63,6 | 36,2 | x | 50/600 |
| MA0760A-AA | 76,2 | 36,4 | | 0/500 |
| MA0760L-AA | 76,2 | 36,4 | x | 0/500 |
| MA0889A-AA | 90,6 | 35,5 | | 50/300 |
| MA0889L-AA | 90,6 | 35,5 | x | 50/300 |
| MA1030A-AA | 102,0 | 34,2 | | 0/250 |
| MA1060A-AV | 106,0 | 38,8 | | 0/200 |
| MA1080A-AA | 107,7 | 35,5 | | 0/250 |
| MA1143A-AA | 116,1 | 35,0 | | 0/200 |
| MA1143L-AA | 116,1 | 35,0 | x | 0/200 |
| MA1330A-AA | 131,3 | 35,3 | | 0/150 |
| MA1397A-AA | 138,6 | 34,7 | | 0/150 |
| MA1590A-AA | 159,0 | 34,8 | | 0/100 |
| MA1683A-AA | 170,4 | 34,5 | | 0/100 |
| MA1683L-AA | 170,4 | 34,5 | x | 0/100 |
| MA1800A-AA | 180,0 | 37,7 | | 0/100 |
| MA1800L-AA | 180,0 | 37,7 | x | 0/100 |
| MA1937A-AA | 193,7 | 37,0 | | 0/100 |
| MA2191A-AA | 223,0 | 34,7 | | 0/75 |
| MA2191L-AA | 223,0 | 34,7 | x | 0/75 |
| MA2730A-AA | 275,2 | 34,8 | | 0/50 |
| MA2730L-AA | 275,2 | 34,8 | x | 0/50 |
| MA6300X-AA | 620,0 | 100,0 | x | 0/50 |

Cylindrical Protectors (MA) - continued

The MA type is a universal protection cap developed for perfect coverage of straight metal, plastic pipes and tubes or external threads in many different hydraulic applications. It has an internal rib, which gives good tightness and is ergonomic. In this range some parts are available with vent hole.

Applications:

MA range is recommended for coverage of straight metal, plastic pipes and tubes or external threads in many different hydraulic applications.

Main features:



Ideal solution for straight metal/plastic pipes & tubes



Suitable for Hydraulics segment



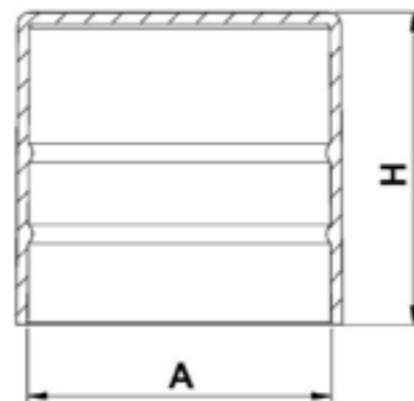
Excellent protection & tightness thanks to an internal rib



Made of RECYCLE LDPE, LLDPE, HDPE, TPE & EVA



Easy mounting & dismantling



Standard colour: Yellow - Other colors may be available upon request

Standard material: LLDPE

| DBI Ref. | A mm | H mm | Venthole | QTY Bag/Box |
|------------|-------|------|----------|-------------|
| MA0060A-BA | 6,3 | 14,7 | | 1000/20000 |
| MA3239A-BA | 324,0 | 36,2 | | 30/0 |
| MA3239L-BA | 324,0 | 36,2 | x | 30/0 |
| MA3556A-BA | 360,0 | 45,2 | | 20/160 |
| MA3556L-BA | 360,0 | 45,2 | x | 20/160 |
| MA4064A-BA | 405,0 | 56,5 | | 15/0 |
| MA4572A-BA | 460,8 | 54,7 | | 15/0 |
| MA5080A-BA | 508,0 | 54,4 | | 15/60 |
| MA6096A-BA | 609,6 | 65,0 | | 10/0 |

Standard colour: Yellow - Other colors may be available upon request

Standard material: HDPE

| DBI Ref. | A mm | H mm | Venthole | QTY Bag/Box |
|------------|-------|-------|----------|-------------|
| MA5300X-EA | 530,0 | 100,0 | x | 0/100 |
| MA5588X-EA | 500,0 | 100,0 | x | 0/100 |
| MA6300X-EA | 630,0 | 90,0 | x | 0/100 |
| MA7112X-EA | 710,0 | 85,0 | x | 0/100 |
| MA8000X-EA | 800,0 | 90,0 | x | 0/50 |
| MA8128X-EA | 810,0 | 100,0 | x | 0/100 |
| MA9000X-EA | 900,0 | 90,0 | x | 0/100 |

Standard colour: Black - Other colors may be available upon request

Standard material: TPE

| DBI Ref. | A mm | H mm | Venthole | QTY Bag/Box |
|------------|-------|------|----------|-------------|
| MA0050A-TA | 5,4 | 15,7 | | 1000/14000 |
| MA1030A-TD | 104,5 | 35,4 | | 0/250 |