

Threaded Gas Caps (AB)

Threaded caps that effectively protect external threads where, in most cases, the liquid is inside the application that is tested under pressure. Some products are available with sealing features to ensure tight closure. Soft and hard material versions are possible in order to match different requirements. Some parts are available with washer or O-ring.

Applications:

AB range is recommended for several applications: cylinder blocks, cylinder heads, adapter plates, connecting rods, lubrication pumps, balance units, oil sumps, timing gears.

Main features:



Ideal solution for cylinder blocks & heads



Suitable for Hydraulics segment



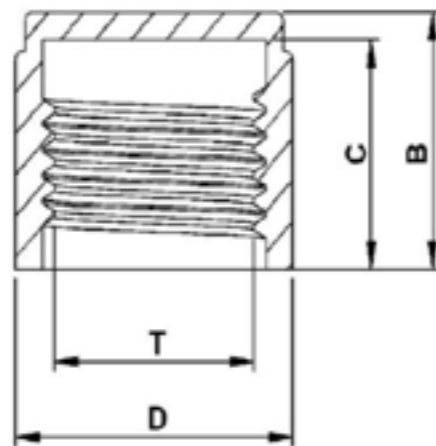
Sealing features for tight closure



Made of LLDPE, HDPE & PA66



Outside vertical ribs for easy mounting & dismantling



Properties

Standard colour: Yellow- Other colors may be available upon request
Standard material: LLDPE

DBI Ref.	Fits Thread T	B mm	C mm	D mm	Washer	O -ring	QTY Bag/Box
AB1001A -BA	R 1/8"	11,0	10,3	13,0			250/22500
AB1301A -BA	R 1/4"	14,3	13,2	16,9			250/10000
AB1701A -BA	R 3/8"	13,3	12,0	21,2	x		250/8000
AB2101A -BA	R 1/2"	14,6	13,8	26,8	x		250/5000
AB2301A -BA	R 5/8"	14,0	12,3	29,1			250/3000
AB2601A -BA	R 3/4"	15,4	13,8	32,0			250/3000
AB3401A -BA	R 1"	24,0	22,8	38,8			100/1200
AB4201A -BA	R 1 1/4"	24,6	23,5	48,9			100/800
AB4801A -BA	R 1 1/2"	28,4	26,3	55,7			100/500
AB6001A -BA	R 2"	28,5	26,8	69,5			50/300

Standard colour: Yellow- Other colors may be available upon request
Standard material: HDPE

DBI Ref.	Fits Thread T	B mm	C mm	D mm	Washer	O -ring	QTY Bag/Box
AB1001A-EA	R 1/8"	11	10,3	13			250/22500
AB2301A -EA	R 5/8"	14,0	12,3	29,1			250/3000
AB2601A -EA	R 3/4"	15,4	13,6	32,0			250/3000
AB3401A -EA	R 1"	24,0	22,8	38,8			100/1200
AB4201A -EA	R 1 1/4"	24,6	23,5	48,9			100/800
AB4801A -EA	R 1 1/2"	27,9	25,9	55,4			100/500
AB6001A -EA	R 2"	28,6	26,8	69,6			50/350
AB7601A -EA	R 2 1/2"	26,0	24,5	82,6			0/300

Standard colour: Yellow- Other colors may be available upon request
Standard material: PA66

DBI Ref.	Fits Thread T	B mm	C mm	D mm	Washer	O -ring	QTY Bag/Box
AB1302A -GA	R 1/4"	14,2	13,0	17,0		x	250/10000
AB1303A -GA	R 1/4"	12,3	11,2	17,0			1000/13000
AB2102A -GA	R 1/2"	10,0		26,0			250/2500
AB2602A -GA	R 3/4"	11,0	9,6	35,8			250/1500