

Threaded Hole Protectors (DC)

This product is ideal for providing a flat closure for internal inch pipe threads.

Applications:

DC range is recommended for protection of internal inch pipe threads.

Main features:



Ideal solution for pipe threads



Suitable for Pipes segment



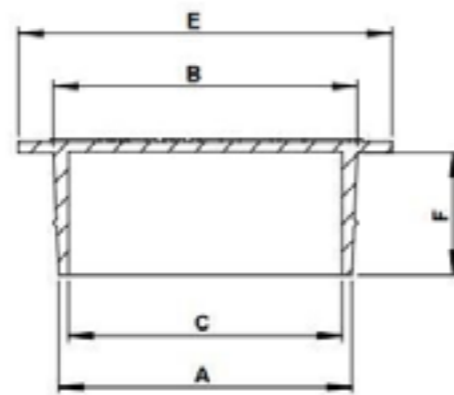
Unique design & flexibility



Made of RECYCLE LDPE



Easy mounting & dismantling



Properties

Standard colour: Red

Standard material: RECYCLE LDPE

DBI Ref.	A mm	B mm	C mm	E mm	QTY Bag/Box
DC0112A-AA	11,2	12,5	9,3	17,2	1000/25000
DC0147A-AA	14,7	16,2	13,1	21,0	1000/15000
DC0152A-AA	14,5	14,5	12,9	23,7	1000/14000
DC0183A-AA	18,3	20,0	16,9	25,7	500/10000
DC0240A-AA	24,0	24,9	22,4	30,6	500/5500
DC0300A-AA	30,0	31,4	28,2	37,4	250/3000
DC0391A-AA	38,8	39,9	37,0	46,4	250/1750
DC0395A-AA	36,6	39,5	-	66,5	200/800
DC0446A-AA	44,6	46,0	42,9	52,5	250/1500