

# Quick Connector Plugs (DR)

Long plug with large flange. The length of the plug ensures tight internal closure, not only during transportation but during pressure tests, as well. The flange protects the external surface and makes the plug easy to remove. Available without a horizontal handle to match packaging and ergonomics. Some plugs meet the requirements of SAE J2044 standard.

### Applications:

DR range is recommended for sealing the female part of a quick connector in fuel lines.

### Main features:



Ideal solution for quick connectors



Suitable for Automotive segment



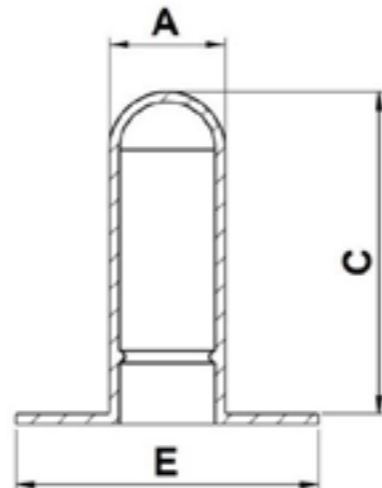
Excellent protection thanks to the external flange



Made of RECYCLE LDPE



Easy mounting & dismounting



### Properties

**Standard colour:** Natural- Other colors may be available upon request

**Standard material:** RECYCLE LDPE

DBI Ref.	Suitable for standards	A mm	C mm	E mm	QTY Bag/Box
DR0080A -AA	SAE 8.0   5/16"	8,0	25,5	22,7	1000/10000
DR0095A -AA	SAE 9.5   3/8"	9,5	26,4	24,8	1000/7000
DR0100A -AA	SAE 10.0	10,0	24,7	26,6	1000/8000
DR0160A -AA	SAE 16.0	16,1	37,0	34,9	1200/2400